



ARVIDA  
**Strathallan**

An Arvida Living Well Community



Welcome  
to Strathallan, an  
Arvida Retirement  
Community in  
Gleniti, close to the  
heart of Timaru.

We challenge  
ourselves to make  
our customers’  
lives better with  
everything  
we do.

## Every individual plays a part at Strathallan

Strathallan is nestled adjacent to Centennial Park in Gleniti, which provides a peaceful and secure environment, close to the amenities and convenience of Timaru township.

Strathallan is South Canterbury’s most comprehensive village, offering a full range of living and care options. The village offers a wide range of one, two or three bedroom villas and a selection of serviced apartments alongside a rest home, hospital and dementia care facilities.

Strathallan has been designed to include landscaped garden areas which provide tranquil surroundings for residents to enjoy.

## Our people at Strathallan love their jobs and what they do

We love our jobs here, and we naturally form strong bonds with our residents. We love to organise gatherings to get people together and to join in. We focus on the welfare of every resident in our care and try to make a difference in their lives every day. We have a great reputation for providing high quality care and assessment where fun and laughter are essential ingredients in our inclusive and caring community.

## Be part of a community that values you

As an Arvida Village, we take care and time to listen, and we’ll help you continue to enjoy the things that you love to do. We’ll encourage participation and engagement in our community, and we’ll help you to remain active and happy.

Our residents really are a friendly and social group. We all respect each other’s privacy, and we enjoy our neighbours’ company at the many village events.

Strathallan obtained its name from the original ship to bring immigrants to Timaru, full of hope and dreams of a new life. So it follows that we offer new hopes and dreams to those choosing to be part of our village and the unique opportunities it provides. We embrace the small things that living in a rural community provides, whether it’s a good conversation, the smell of fresh bread baking or noticing how the seasons slowly change.

We take pride in providing a fantastic community centre which can be enjoyed by every resident. It is centrally located and offers a wide range of facilities including a café, cinema, library, gym, indoor sports and hair and beauty salon.

Set amongst beautiful gardens, Strathallan is community within a community – with residents enjoying the swimming pool and spa, barbeque, golf croquet and even getting their hands dirty in our extensive vegetable gardens.







## We're well known for our personal care

Strathallan is well known in the wider Timaru community for offering a full continuum of care for its residents.

You can access care services while living independently in your own serviced apartment. We can assist with meals, laundry, cleaning, access to doctors and nurses and 24 hour emergency assistance. We also provide full rest home level care and have the ability to transfer you from a serviced apartment to our hospital.

The availability of continuing care within the village means that all residents have preferential access to the rest home and hospital. This enables us to look after your current requirements and adapt to changes in your health or personal circumstances, should they occur.

Ask us about how we can tailor our care plans for you, or take a look at our specialist brochure for our serviced apartments.

## Continuing care plan options:

Our care package fees have been designed so we can provide the best value care for you. We have several care packages to choose from, including basic entry level through to full rest home level care. Please ask your village manager for a full list of costs and inclusions.

## Our professional staff offer real peace of mind

Strathallan's village manager is supported by a dedicated team including care managers, registered nurses, enrolled nurses and caregivers, all with a passion for aged care nursing. All of our care staff participate in our diverse education programmes.

## Flexible care plans

We are able to look after your current needs, and can also provide more care and assistance should your personal circumstances change.

We offer a full range of care plans for residents who are fully independent through to those who are not able to live independently. Should short term or permanent care be required we offer a full range of options. This gives you, your partner and your family the comfort of knowing you'll always have the support and care you need, when you need it.

## Rest home, hospital and specialised dementia care

Strathallan is one of South Canterbury's most comprehensive lifestyle villages offering a full range of living and care options.

We provide all levels of care within our care facilities, including 17 rest home beds, 40 hospital beds and 20 specialised dementia care beds. Premium and standard rooms are available in each care unit.

A registered nurse is on site at all times, 24 hours a day, 7 days a week. Each care area has a caremanager who is a registered nurse. In addition our enrolled nurses, care assistants, household staff, maintenance and grounds staff ensure Strathallan's residents are fully catered and cared for.

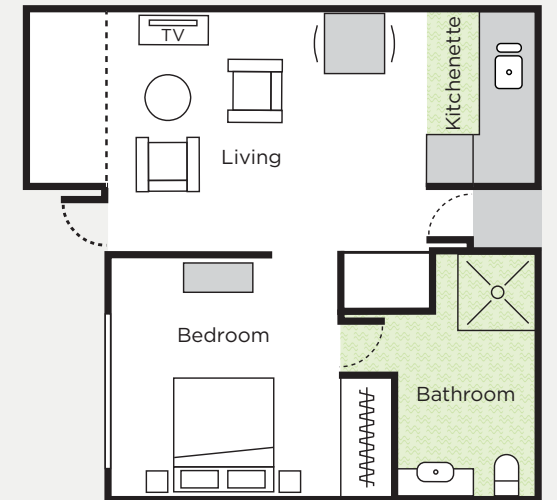




## Serviced apartments

Our 47 impressive Gleniti serviced apartments come in a range of sizes and configurations to suit your requirements. All apartments are spacious with plenty of natural light and have a wide range of services available depending on your individual requirements.

Each has a full kitchen with dishwasher, oven and pantry, a heat pump or underfloor heating and a tiled ensuite. Some units have a second bedroom configuration. The rooms have been designed to be suitable for rest home level care and a registered nurse is on-site 24 hours a day, seven days a week. Residents have access to neck pendants which connect directly to our monitored emergency call system.



*Typical one-bedroom serviced apartment*

## The accommodation at Strathallan

### Independent villas

Our independent villas offer you the best of both worlds – freedom to come and go as you please, while knowing our friendly community will welcome you home.

Each of our 51 villas have been architecturally designed and arranged with your comfort, convenience and security in mind. Every villa is unique in its design and we have taken care to ensure that all homes enjoy plenty of sun and privacy.

Strathallan has a selection of 1, 2 and 3-bedroom villas each featuring spacious living areas with easy access to gardens.

Quality fittings and furnishings allow you to relax in complete comfort and privacy. Ensuite bathrooms feature a shower, slip-reduction tiles and underfloor heating. All villas have a private outdoor space and spacious bedrooms include built-in wardrobes. All villas have heat pumps and an independent laundry in the garage.

We provide 24/7 monitoring for personal medical pendants connected to on-site 24 hour nursing support. A fire protection system is also in place.

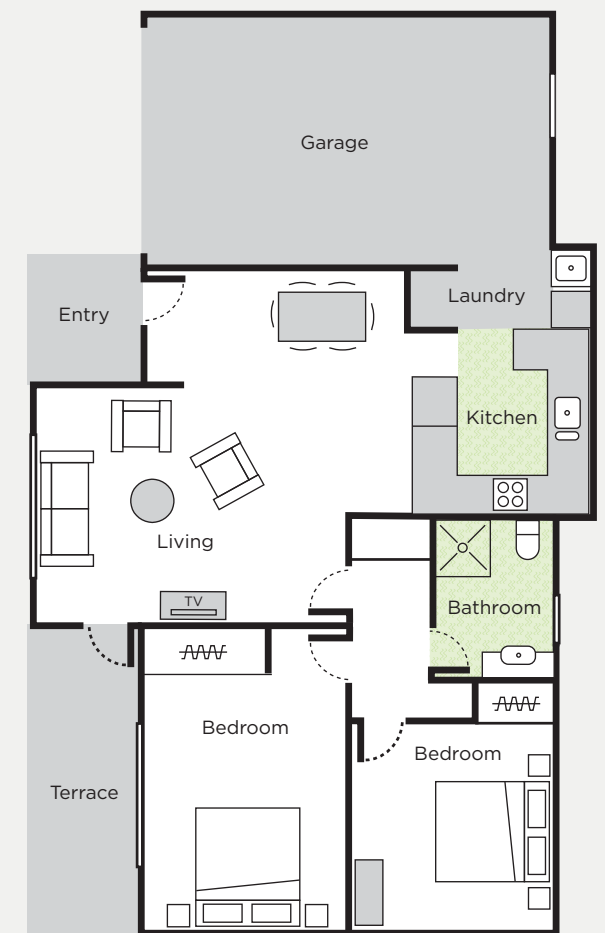
Most villas have garages attached and additional on site parking is available if required.

## Rest home, hospital and specialised dementia care

Strathallan has 18 rest home and 38 hospital care rooms available. Each room features full en suite facilities, underfloor heating, TV and telephone points. There are many spacious, comfortable lounge areas and a comprehensive activity programme.

Premium and standard rooms are offered in each care unit and residents are welcome to decorate their rooms with their own precious belongings to help make the rooms feel like home.

Our specialised dementia care staff support residents in making the most of every day, through social interaction and meaningful activities, both here and in the community. There is an emphasis of supporting family members and friends to continue their connections with their loved ones.



*Typical two-bedroom villa*





## Our commitment to you

Strathallan is an Arvida community so we all enjoy the down to earth values that drive everything we do. We're always looking for new ways to make life in our community as fun and enjoyable as possible.

We're a family of friends in a supportive and caring community. The most important things in life to us are the people we live together with every day.

## It's a wonderful retirement lifestyle at Strathallan

At Strathallan, we help to provide days of fun that are full and rich. Every resident is encouraged to enjoy the in-house activities on offer, and to take part in our many excursions and shopping trips around Timaru.

There is always so much to do here. Whether it is reading a book in a quiet nook in the garden, playing petanque with friendly rivals, or catching up with a neighbour, the choice is yours!

Strathallan has an extensive activities programme with a wide range of options to cater for the needs of all our residents.

Friends and family are welcome to visit Strathallan for activities and special events, or to join our regular 'happy hour' for drinks and nibbles. You may also choose to make use of the café which is the social epicentre of Strathallan village life and where you can enjoy the tasteful décor and wonderful food that's prepared on site.

## The best decision you'll ever make!

It is always a big decision to move away from your old home, but when the time is right to scale down, you really need to do your homework well.

We can help you with this decision by showing you what Strathallan already offers the residents who live here. We welcome you to visit any time, and have a first hand chat with members of our community to find out

for yourself what makes our village so special. Enjoy independence and privacy with no maintenance worries and socialise with your new friends. There's always so much to do here – there's no chance of getting bored!

We're happy to show you around Strathallan any time. Why not give us a call to have a chat about your personal needs.



## A few of the common questions...

### Why do people love living at Strathallan?

We listen to our residents and what we consistently hear is:

- We love the community feel and the proximity to parks, transport and other Timaru amenities
- I've made a lot of new friends with different interests from mine
- This is a place of smiles
- I just love coming home to my warm home.

### What levels of care are there?

Our village offers a full continuum of care, which means you'll have real peace of mind. The care packages range from low level care right through to rest home, hospital and specialised dementia care.

### Can I move into the care facilities of the village later on?

Yes, as part of our community, you will have priority access to the care services offered by Strathallan. If you might need a little extra help in the future with your day-to-day living, you can choose to move within our village to more suitable accommodation.

### What happens if I'm ill or if I require more care while living in my serviced apartment?

If your health needs change, we're here to provide you with personalised care and support. In many cases, care packages can be tailored so that you can receive added support in your home. If you require respite or full time care we can talk through the options with you.

### Can my family and friends stay with me in my villa?

Yes of course, anytime while they are visiting you can have family and friends come to stay in your independent villa.

### Can I have my pets with me?

Yes, we know that pets are important and are often a much loved part of the family. You can have a small pet in your villa, but you will need to contact our manager to confirm that your pet is suitable. Visiting pets are welcome in our care facilities.

### Is there space for my car?

Most villas have internal access garages and carports are available for our serviced apartments. There is additional onsite parking also – please ask our village manager for more info.

### Is there security at night?

Our staff are on site 24 hours a day. Residents have access to neck pendants which connect directly to our emergency nurse call system. A fire protection system is also in place.

### What other costs will I have in my 'Licensed to Occupy' apartment or villa?

In addition to the Deferred Management Fee, you will be responsible for:

- Your telephone bill
- Your contents insurance
- Your car insurance
- Your power bill.

There is also a weekly village fee which in the case of serviced apartments includes power. There may also be costs for any

extra services should you require them. e.g. laundry and house cleaning. See our serviced apartment brochure for details and current prices.

### Can I arrange for any other fittings to be added to my home?

At Strathallan, we do everything we can to ensure you have your home the way you want it. You can choose to add items to make life a little easier like additional heating and security door or fly screens. We can help you with installation of these extras but they will be at your cost.

### What happens when I leave?

We do our best to support you and your family in every way we can. The village fees stop immediately after you leave, and we begin the marketing and sale of your ORA.

### Who is our village manager?

Rosie Chambers has been working within the village for over five years. Rosie has come from a nursing background but has more recently been working within the village as a Wellness Manager. Rosie enjoys building relationships with residents and their families to ensure wellbeing is at the heart of every decision made, enabling our residents to live well every-day.



Rosie Chambers  
Village Manager





We'd love to have  
the opportunity to  
welcome you to  
**Strathallan**

If you're looking for a retirement community where you can continue to enjoy life to the full, and where people respect and look after each other, we'd love the opportunity to show you around Strathallan.

Why not give us a call and experience Strathallan for yourself?

31 Konini Street  
Gleniti, Timaru 7910

Phone 0800 278 432  
or 03 686 1996 or email  
[info@strathallanretirement.co.nz](mailto:info@strathallanretirement.co.nz)

**[www.strathallanretirement.co.nz](http://www.strathallanretirement.co.nz)**



ARVIDA  
**Strathallan**

An Arvida Living Well Community