



Enjoy life, your way



MERIVALE

RETIREMENT VILLAGE



MERIVALE

RETIREMENT VILLAGE

Welcome to Merivale Retirement Village

Get the most out of life in our elegant retirement community nestled in lush gardens and perfectly positioned in the heart of Merivale. With health services, entertainment and public transport on your doorstep, you'll have everything you need and more. For over 20 years we have been delivering excellence in retirement care, so we know you'll be delighted in choosing Merivale Retirement Village as your retirement destination.



Contents

Your wellbeing is our focus	5
Our Philosophy	8
Our Vision	8
Make yourself at home	11
Nourishment made with love	11
Personalised Care Options	12
Accommodation and Care Options	14
Fully Serviced Care Suites	14
The Village Package	17
Fully Serviced Apartments	18
Fully Serviced Apartments Floorplans - Ground Floor	20
Palazzo Apartments	22
Palazzo Apartments Floorplans	24
Accommodation - Villas	27
Villas Floorplans	28
Accommodation - Townhouses	30
Why Choose Merivale Retirement Village	34
FAQs	37
Make Merivale Retirement Village your home	38





MA
MAIVALE
RESIDENT VILLAGE



Your wellbeing is our focus

A very warm welcome to you and your family.

We're excited to introduce you to Merivale Retirement Village because we're proud of the people who work here, the outstanding care they provide, our beautiful environment and luxurious accommodation.

Your wellbeing is our focus. Respect, care, dignity and compassion are part of the positive culture we encourage. As Christchurch locals with over 20 years' experience in the senior living care industry, we're dedicated to taking care of you, our city and its future.

With fully serviced, sophisticated care suites and deluxe apartments, supported living and independent senior living options, we're happy to offer a range of homes and care levels to meet all your retirement needs.

You'll love the location! Merivale is one of Christchurch's most established and sought after suburbs, boasting easy access to doctors, dentists, lawyers and other professional services, as well as being close to the Merivale Shopping Centre. Stay connected with family, friends and neighbours while living an active life supported by our caring, professional staff.

The Village is built to the highest seismic safety and architectural design standards to ensure your protection and comfort. Landscaped gardens and beautifully appointed interiors will make you feel right at home.

Our cheerful, professional team provides continuous support customised to meet your needs. You can be as laid back or busy as you wish. With spacious, quality accommodation choices, outstanding on-site facilities and social opportunities on tap, we're committed to offering you maintenance-free, harmonious living in a safe and neighbourly environment.

Like you, we care about history and heritage. We know you come to us with a lifetime of experiences and relationships and we're passionate about cherishing and respecting your story.

We look forward to meeting you at Merivale Retirement Village.





Our Philosophy

Freedom. Peace of mind. A warm and happy home environment where you can live the life you want. We encourage and support you to make the most of your abilities, and where possible, increase your confidence to grow and enjoy as much independence as possible.

Our goal is to provide you with a private and comfortable home, where you can welcome friends, family/whanau and other visitors.

We know each person has different needs, aspirations, values and customs. We'll nurture your individuality, respect and encourage your independence and support you to lead a full, enriched life.

We are committed to the safe management of residents, visitors and staff at all times. We make clear communication a priority, ensuring you and your family are kept up to date on the best methods of care. Our highly trained staff provide world-class care, support and services.

Our Vision

To provide total care for our residents and improve their independence in an environment where respect, dignity and privacy are upheld at all times.

A Great Decision

“I want to thank the wonderful team at Merivale Retirement Village for taking such great care of our mother. She was hesitant to leave her home after so many years and we looked at several retirement villages before deciding on Merivale. I’m pleased to say this was the best decision we could have made. Mum is now happily settled into the community and enjoying the company of new friends and social activities in a safe, friendly and beautiful environment. And we have peace of mind that Mum is being cared for by people who respect and care about her. Thank you again.”

Sue & John Williams





Make yourself at home

Merivale Retirement Village is first and foremost a home. We will listen to your needs and provide a fulfilling and engaging environment. The village has been designed for your enjoyment with a library, hair salon, luxurious lounges and comfortable well-appointed individual accommodation. Our elegant dining room is the ideal spot for you to enjoy the company of friends and family whilst admiring beautifully landscaped gardens and courtyards.

Nourishment made with love

Our village chef prepares delicious and nourishing meals. In conjunction with our nutritionist, we ensure all meals are beautifully presented, taste great and provide residents with all they need for a healthy lifestyle. Specialist nutrition requirements such as gluten free or diabetic diets are catered for in consultation with the resident and our nutritionist. We regularly change our menu to take advantage of seasonal fruit and vegetables.

Personalised Care Options

Our focus is on providing care solutions with excellence. We know one size does not fit all, which is why we provide a wide range of care and accommodation options to meet your individual needs.

Choose from:

- fully-serviced care suites offering hospital and rest home level care
- fully-serviced apartments offering up to rest home level care
- supported living in our Palazzo Suites
- independent living in our Villas
- independent living in our Town Houses

All rooms have 24-hour emergency call buttons, so we're always there when you need us. Our qualified and experienced staff will enrich your daily life and give you peace of mind knowing support is close at hand. We will work with you and your family to customise the care solution that is best for you. Merivale Retirement Village offers continuum of care so you can enjoy life, safe in the knowledge you can stay in the same facility should you or your partner's requirements change in the future.





Accommodation and Care Options

Fully Serviced Care Suites

For rest home and hospital residents looking for a luxurious and spacious setting, we offer care suites with private ensuites overlooking manicured gardens on the first floor of our facility.

Residents can purchase a care suite on a License to Occupy basis through an Occupation Right Agreement.

Our care suite residents are assessed as requiring rest home or hospital level care and together with your family, a comprehensive care plan is designed to enhance your wellbeing and comfort.

Our facility is renowned for quality clinical care. Our fully trained and dedicated staff take care of everything, ensuring you or your loved one receives the specialised 24 hour care they require.

Rest Home and Hospital Level Care

This level of care is available only if you have been assessed as eligible for Rest Home or Hospital Level Care.

This level of care meets the requirements for fully subsidised or private Rest Home or Hospital Level Care.

In addition to your Occupation Right Agreement, we require you to sign our Admission Agreement for the Rest Home which outlines our obligations to you and yours to us when we are providing you with Rest Home level care.

The Rest Home Subsidy fee (or equivalent if privately paying) may change from time to time with Government funding changes.

Rest Home Level Care includes:

- Breakfast, lunch & dinner in the dining room
- Daily cleaning of your suite
- Your bed made daily
- Assistance with dressing and preparation for the day
- Assistance with showering
- Evening bed time service
- Administering medications
- Overview of your care by a registered nurse
- Coordinating GP visits
- Supplied pharmaceuticals
- Provided medical supplies
- Prompting and/or assistance to and from the Village
- Night visits







The Village Package

All resident owners incur:

- the Village Contribution in accordance with your Occupation Right Agreement
- the Village Outgoing Fees, which are the minimum fee to reside in the village

Services Included:

- All exterior maintenance
- CCC property & water rates
- Building insurance
- Scheduled gardening & lawn mowing
- Lift maintenance
- Emergency nurse call systems
- Security
- Exterior window cleaning
- Maintenance of the communal areas
- Heating/power in the communal areas
- Village vehicle expenses
- Village management

Weekly Village Outgoing Fee: \$155.00

Fully Serviced Apartments

Conveniently located on the ground floor, the Merivale Retirement Village Care Facility has beautifully appointed serviced apartments for residents who require care but would like a little more space. Take comfort in the knowledge that 24 hour medical care is available at the touch of an emergency call button. These luxurious apartments are purchased on a 'License to Occupy' basis and come with one of our care packages:

Starter Package

The starter package includes the following services and benefits:

- Rates
- Building insurance
- Emergency call alarm monitored 24/7
- Fire sprinkler system and smoke alarms
- Exterior repairs and maintenance
- Window cleaning
- Maintenance of common areas and community facilities
- Housekeeping of apartment
- Heating of apartment and communal areas
- Initial health assessment and reassessment as required
- Your laundry changed weekly (sheets/ pillowcases)
- The use of the residents' laundry (for personal clothing etc.)
- A facecloth, hand towel and bath towel daily (one set)
- A cooked midday meal in the dining room
- Morning and afternoon tea
- An activities programme including entertainment, happy hour, exercise classes
- Scheduled mini-bus outings.

\$195 Starter Package Fee

\$155 Weekly Village Outgoing Fee

\$350 Total Weekly Fee

Starter Premium Package

The Starter Premium package includes all the benefits of the Starter Package as well as:

- Breakfast to your apartment daily
- Your evening meal in the dining room
- Your bed made daily
- A personal laundry service, three times per week.

\$350 Starter Premium Package Fee

\$155 Weekly Village Outgoing Fee

\$505 Total Weekly Fee

Relaxation Package

The Relaxation Package includes all the benefits of the Starter Package plus:

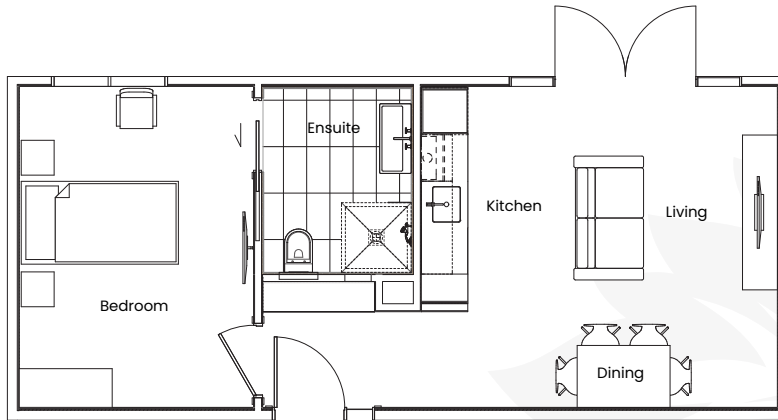
- Breakfast to your apartment daily
- Your evening meal in the dining room
- Your bed made daily
- A personal laundry service, three times per week
- General care and assistance including:
 - Assistance with dressing and preparation for the day
 - Full assistance with showering
 - Administering medications, three times per day
 - Evening bed time service.

\$550 Relaxation Package Fee

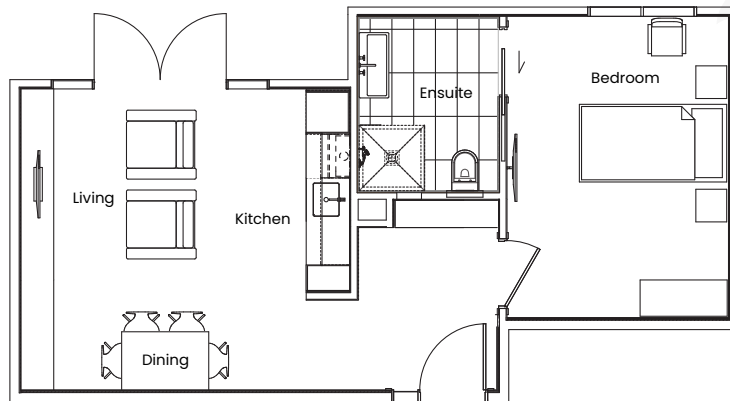
\$155 Weekly Village Outgoing Fee

\$705 Total Weekly Fee

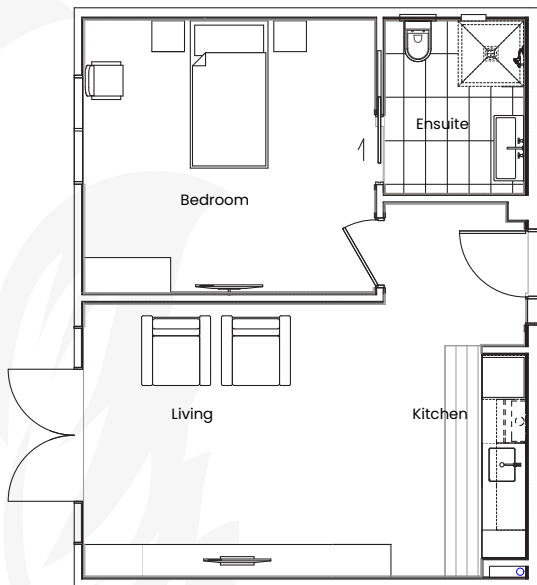
Fully Serviced Apartments Floorplans - Ground Floor



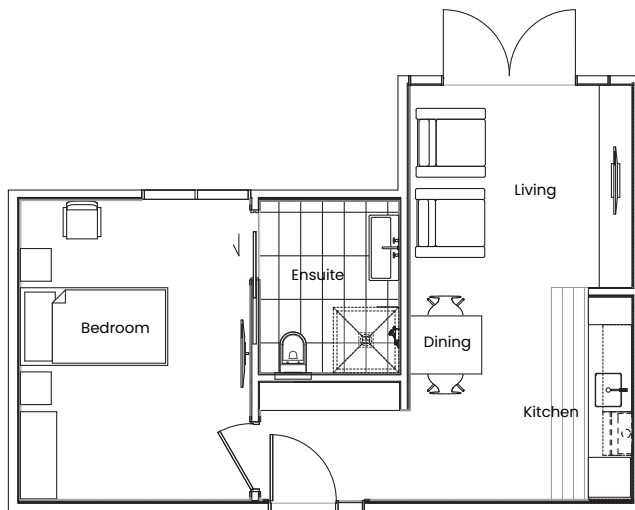
Serviced Apartment type 1



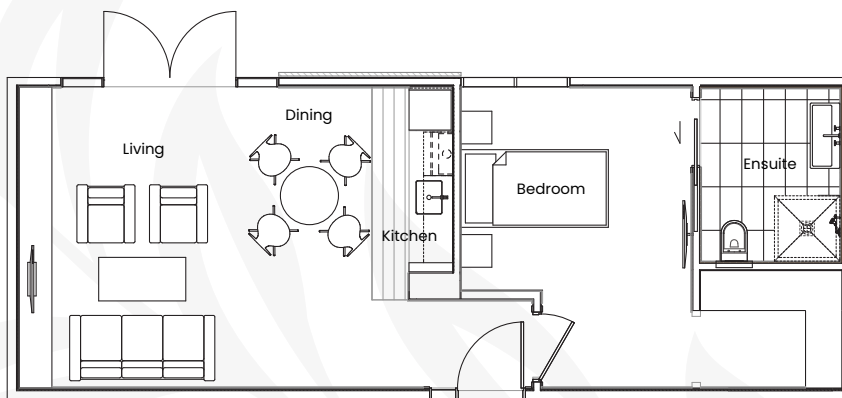
Serviced Apartment type 2



Serviced Apartment type 3



Serviced Apartment type 4



Serviced Apartment type 5

Palazzo Apartments

Supported Living

Sophisticated and elegant, Palazzo Apartments offer the perfect combination of semi-independent living and privacy. Enjoy the freedom from house and garden maintenance. Ideal for those requiring light assistance (perhaps housework and making of the bed), but not necessarily help with personal care. Meal delivery to your apartment is available.

This is a great solution for semi-independent individuals or for couples where one partner requires more assistance than the other.

One and two bedroom Palazzo Apartments boast their own garden setting with easy access to social activities within the village.

You may require or wish to purchase one of the following care packages. These packages may be modified to suit your individual needs.

Palazzo Starter Package

- Daily cleaning of your bathroom
- Morning Tea and Afternoon Tea
- Weekly cleaning of your apartment
- Rubbish and recycling disposal
- Once daily caregiver visit to check on your wellbeing
- Full access to all village communal facilities and social and activities programmes

\$140 Weekly Starter Package Fee

\$155 Weekly Village Outgoing Fee

\$295 Total Weekly Fee

Palazzo Starter Premium Package

- All services provided in the Starter Package
- Electricity charges
- Lunch and Dinner
- Laundering of linen and personal clothing (washed, folded and dried)
- Daily supply of clean towels
- Daily bed-making
- Weekly bed linen change
- An extra daily caregiver visit to check on your wellbeing.
- Overview of your general health needs by a Registered Nurse

\$350 Weekly Starter Premium Package Fee

\$155 Weekly Village Outgoing Fee

\$505 Total Weekly Fee

Palazzo Relaxation Package

- All services provided in the Starter and Starter Premium package
- Full care planning by a Registered Nurse
- Full assistance with showering, dressing, toileting, personal cares, medication administration and clinical oversight.

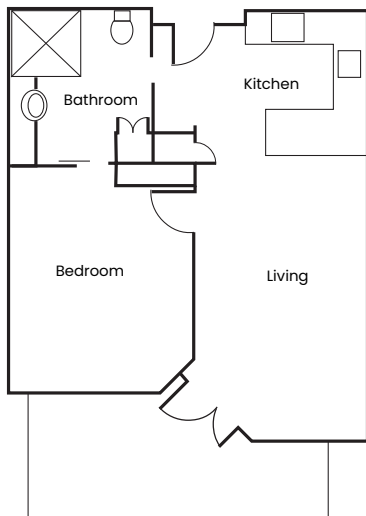
\$550 Weekly Relaxation Package Fee

\$155 Weekly Village Outgoing Fee

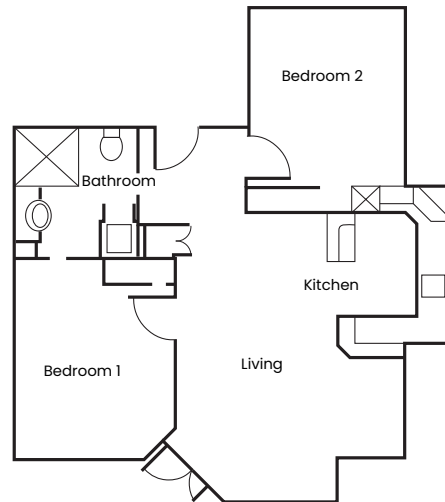
\$705 Total Weekly Fee



Palazzo Apartments Floorplans



Palazzo Apartment with 1 bedroom
Floorplans may vary



Palazzo Apartment with 2 bedroom
Floorplans may vary





Accommodation - Villas

Independent Living

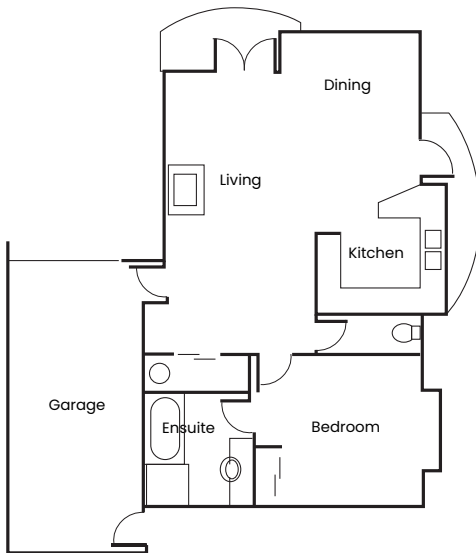
Living independently in a Villa gives you complete freedom to pursue your own interests and lifestyle. It's the independence you've always enjoyed, but with added security, and easy access to companionship and support services if you so choose.

Of course there's always the option of extra help from our handymen, gardeners and housekeepers, plus peace of mind for both you and your family that a 24 hour emergency call service is on hand.

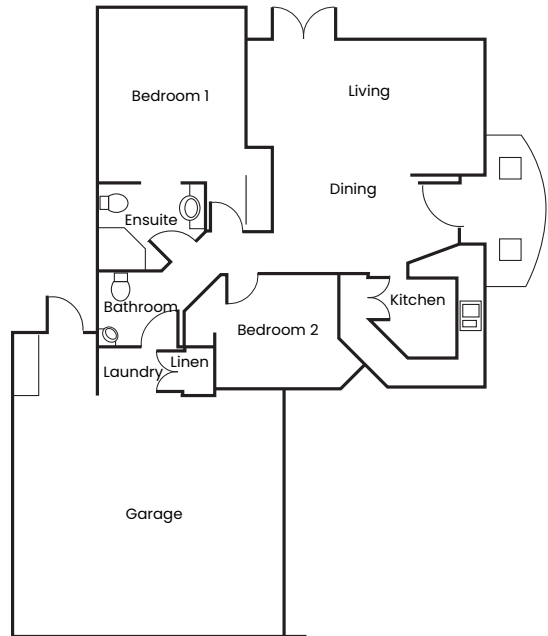
All villas enjoy their own private courtyard, fully equipped kitchens, laundry and bathrooms, internal access garaging, luxury neutral décor and delightful garden setting.



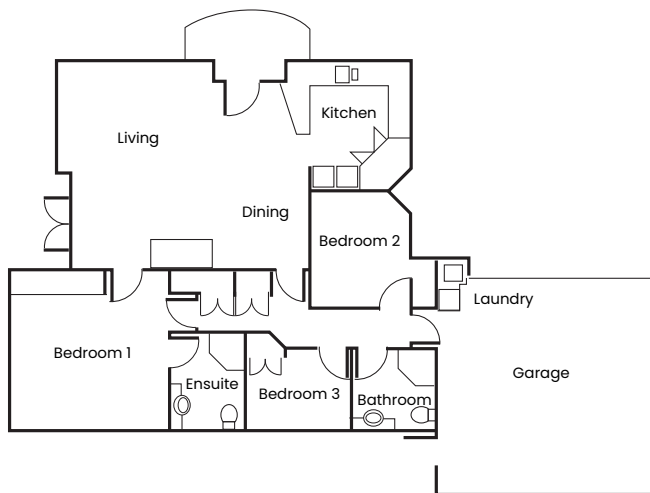
Villas Floorplans



Villa 1 bedroom
Floorplans may vary



Villa 2 bedroom
Floorplans may vary



Villa 3 bedroom
Floorplans may vary

Accommodation - Townhouses

Live Life Your Way

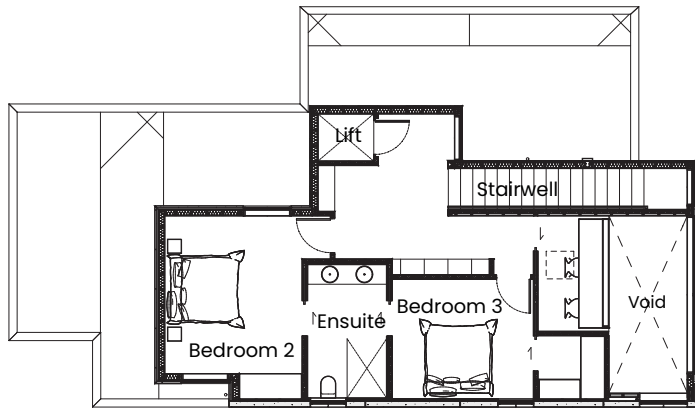
Thrive in independent luxury with the confidence of a supportive, senior living community around you. Currently available for purchase off the plan and ready for occupation in 2020, these premium three bedroom townhouses are retirement living at its very best.

Enjoy three deluxe bedrooms with ensuite and walk-in wardrobes, a study, gorgeous courtyard garden, a fully equipped kitchen and laundry and two car garaging. Private and spacious, these stunning homes offer a lift and all the benefits, social activities, services and convenience of our secure retirement village.

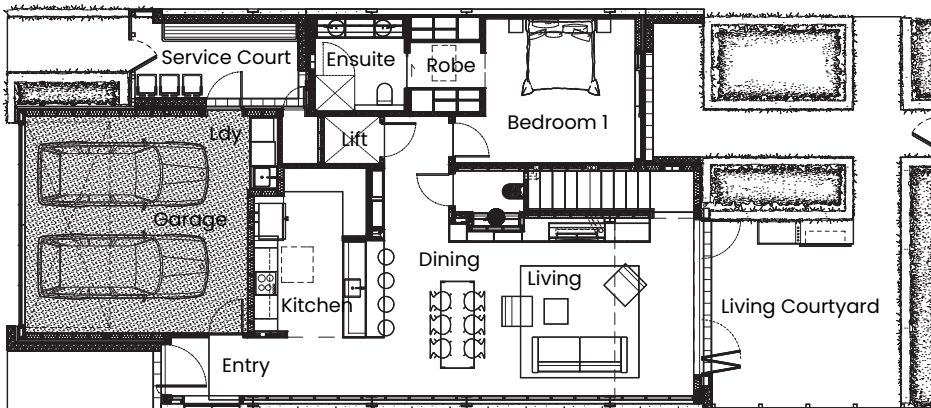
It's your choice! With complete freedom to live life your way, there's always the option to get a helping hand from handymen, gardeners, housekeepers and to take advantage of our 24 hour emergency call service.



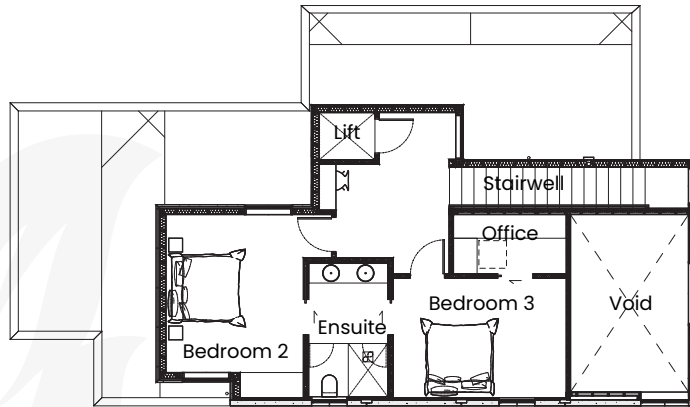




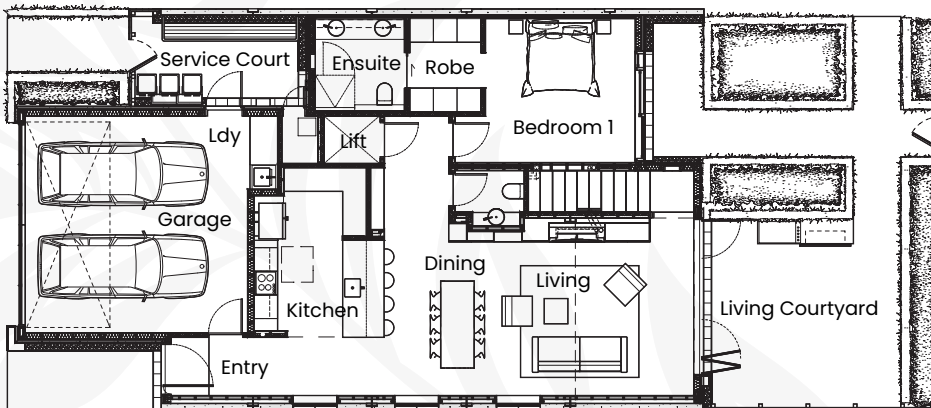
Townhouse type 1 - First floor



Townhouse type 1 - Ground floor



Townhouse type 2 - First floor with office



Townhouse type 2 - Ground floor

Why Choose Merivale Retirement Village

Peace of Mind

- Intimate setting that supports people as individuals within a close-knit community
- Continuum of care and support options allowing you to remain in the village close to friends and caregivers should your needs change in the future
- Independence within a supportive environment so you can live with confidence
- 24 hour emergency button for immediate assistance and peace of mind
- Structural integrity and design exceeding the National Building Standard for seismic safety
- Architectural design by award-winning Jerram Tocker Barron Architects Ltd
- Construction by Christchurch based Jones and Wyatt Construction

Social Activities

- Wine and cheese evenings
- Shows at the Isaac Theatre Royal
- Movie nights
- Game nights with Bingo, Bridge, Mah-jong
- Weekly indoor bowls
- Regular entertainers and guest speakers
- Inter-village quiz competitions
- Bus trips and outings to places of interest in the local community
- Tai Chi
- Men's and ladies happy hour
- Garden house village luncheon



Local Amenities

- Banks (ANZ, BNZ, Westpac)
- Kiwibank NZ Post Shop
- Parks (Rugby Park, Mashino Park)
- Doctors
- Dentists
- Pharmacy
- Papanui Library
- St. Albans/Merivale Bowling Club
- Restaurants, cafés and takeaways
- Supermarkets
- Merivale Shopping Centre and other retail outlets
- Cinemas

On-site Facilities and Services

- Comfortable, well-appointed individual accommodation
- Elegant, welcoming communal facilities
- Hair salon
- Mobility and exercise programmes
- Laundry Service
- On site parking
- Daily postal services
- Fast Fibre connection
- Bus stop close to village



FAQs

Can I still apply for Government-funded financial help?

Yes, if you are 65 years or over and your 'support needs assessment' confirms you may be eligible for Government financial assistance. Talk with one of our Nurse Managers. We have arrangements with local authorities to ensure you receive help to find out about the benefits you may be entitled to.

What security is there?

One of the key reasons residents choose Merivale Retirement Village is for the enhanced security. We provide 24 hour emergency call systems in every room, as well as smoke and intruder alarms.

Who will look after my lawn and gardens?

We provide you with an independent retirement lifestyle, so we leave that choice up to you. Our enthusiastic village gardeners maintain all the grounds within the village, but if your unit has a garden you can choose to care for it yourself, or arrange for gardening services.

Are there church services I can attend?

A monthly multi-denominational church service is held onsite, and regular prayer meetings

every 2 weeks. Alternatively, there are a number of churches located nearby within Merivale. We can help you to arrange transport so you can attend.

Can I have pets?

Villa and Town Home residents may negotiate to bring their own neutered, vaccinated cat if they already have one.

What if I want to go on holiday?

This is your home, so you have the freedom to come and go as you please. We will maintain the grounds and security of your home while you are away, so you can relax and enjoy your holiday.

Can my friends and family visit me?

Yes. Visitors are welcome as often as you like.

How does the fee structure work?

Naturally, there will be numerous considerations around costs. We aim to be transparent about all fees involved so please do not hesitate to ask staff to clarify any queries you may have.

Make Merivale Retirement Village your home

Deciding you would like to know more is the first step towards finding your new home. We welcome the opportunity to show you around Merivale Retirement Village, a place where you will live well, be recognised as an individual and maintain the community connections and interests important to you.

Our knowledgeable, friendly staff would love to talk with you about the many benefits of joining our community.

Please contact us to find out more and organise a tour of Merivale Retirement Village.

We look forward to meeting you.

Contact Leah Moore – Sales Consultant
reception@merivaleretirement.co.nz
021 971 487

www.merivaleretirement.co.nz
03 375 4117











MERIVALE

RETIREMENT VILLAGE

Merivale Retirement Village
27 Somme Street
Merivale, Christchurch

03 375 4117
www.merivaleretirement.co.nz

