



The attitude of living well.



Olive Tree
ARVIDA RETIREMENT & CARE

Welcome
to Olive Tree, an
Arvida Retirement
Village that is part
of the community in
Palmerston North.

We challenge
ourselves to make
our customers’
lives better with
everything
we do.

Every individual plays a part at Olive Tree

We know everyone, whether resident or staff, on a first name basis at Olive Tree. We strive to enhance the quality of life for every individual member of our community by providing a friendly, safe and supportive environment.

Olive Tree is set in an award-winning garden estate, where every day offers a chance to participate in a diverse range of activities, sharing good times and memories with newly-made friends. Around the beautifully landscaped grounds you’ll find lovely Villas, Serviced Apartments, the Olive Tree Rest Home and Dementia care unit.

Our people at Olive Tree love their jobs and what they do

Our gardeners are passionate about maintaining our wonderful garden paradise and bowling green for everyone to enjoy. Our residents and staff love to organise gatherings to get people together – whether in the garden or at our many social activities. We love our jobs here and we naturally form strong bonds with all of our residents. We know that you’ll feel at home here at Olive Tree.

Be a part of a community that values you

As an Arvida Village, we take care and time to listen, and we’ll help you to continue to enjoy the things that you love to do. We’ll encourage participation and engagement in our small community and we’ll help you to remain active and happy.

Imagine your retirement like this, doing what you love to do

At Olive Tree Retirement Village an enjoyable, enriched retirement experience awaits you.

Our friendly and welcoming community offers the perfect environment for those looking for a little more companionship and support. The facilities and activities within the Village are available for everyone to enjoy and you will be encouraged to join in and participate as much as you like while still enjoying your privacy.

We have lawn bowls, a dart board, supervised exercise programmes, movie afternoons, happy hours, spa pool, unisex hairdresser, music therapy, craft sessions, exercise classes, church programmes, weekly shopping trips and more.

Our social calendar is very popular and family and friends from outside the Village are always welcome to join us.





We're well known for our personal care

Olive Tree is well known in the wider Palmerston North community for offering a full continuum of care for its residents.

You can access care services while living independently in your own Apartment.

We can assist with meals, laundry, cleaning, access to doctors and nurses and 24 hour emergency assistance. We also provide the ability to transfer from an Apartment to our Rest Home should

it be required in the future. We provide a range of options and we can look after your current requirements, and adapt to changes in your health or personal circumstances, should they occur.

Ask us about how we can tailor our care plans for you, or take a look at our specialist brochure for our Villas and Serviced Apartments.

Rest Home and our Care Plan options:

Our fees are carefully calculated so that we can provide the optimum care for you at prices that are as affordable as we can possibly make them. Ask our Village sales manager for a full list of costs and inclusions.

Our professional staff offer real peace of mind

Olive Tree's Village Manager is supported by our qualified and professional care staff who all participate in our diverse education programmes. So rest assured, you're in safe hands at Olive Tree.

Flexible Care Plans

We are able to look after your current needs and can also provide more care and assistance should your personal circumstances change. This gives you, your partner and family the comfort of knowing you'll always have the support and care you need, when you need it.

Dementia Care

Our Dementia Unit (some rooms have ensuites) offers the very best of care and personal attention in a friendly, family focused environment.

Rooms are light and airy, with views over lovely gardens and delicious meals are prepared daily in our kitchen.



The Accommodation at Olive Tree

Independent Villas

Olive Tree Villas are spacious homes with open plan layouts, and feature lovely kitchens and bathrooms. In your new Villa you can enjoy independent living in a well-appointed single or 2 level home, surrounded by friendly neighbours and beautiful tranquil gardens. We can provide support for you in the future if you need a little further assistance with day to day living, and you will have the comfort of knowing there is also full medical assistance available through a monitored emergency call system in your Villa.

Serviced Apartments

Olive Tree Serviced Apartments are sunny, modern and warm and combine private and independent living with extra assistance if it's needed. These services may include the provision of meals, a personal laundry service, regular housekeeping by our friendly staff, help with medications and more. You may also arrange to have full Rest Home level care in the future should you need it.

Rest Home Rooms

Olive Tree's Rest Home is situated in the heart of the Village and offers rooms with ensuites, all providing full 24 hour care.

The atmosphere is warm and vibrant, with views of the gardens that can be enjoyed from many of the rooms.

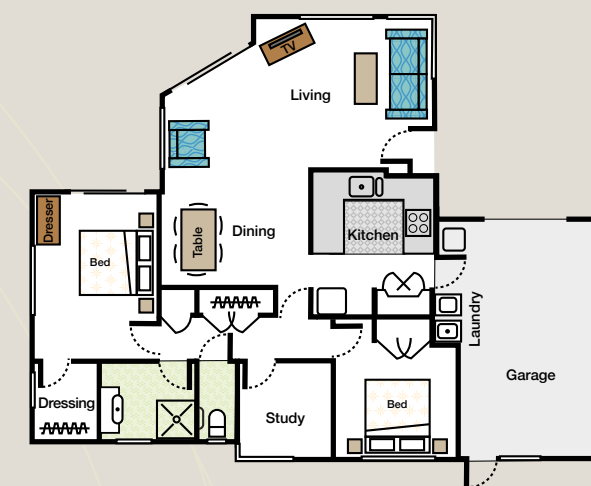
Our Dementia Care Unit

We also have a secure Dementia Care Unit staffed by carefully selected and qualified Dementia specialists.

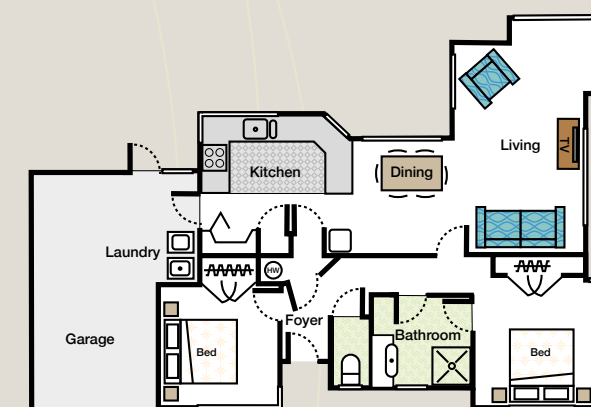
Friends and family are very welcome to visit and participate with our activities and outings. We love to see everyone involved and engaged with what's going on and to be part of things.

We are always looking for ways to help our residents with Dementia to be as involved, comfortable, and happy as possible.

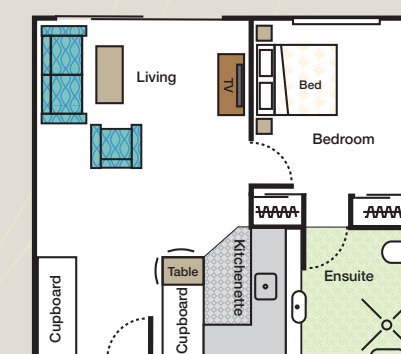
Our Dementia Care Specialists and carers are hand chosen for their empathy, skill and temperament for this specialist profession.



Typical 2 Bedroom & Study Villa



Typical 2 Bedroom Villa



Typical 1 Bedroom Apartment



Our commitment to you

Olive Tree is an Arvida Village, and we are down to earth people here. Our values are genuine and they drive everything we do. We're always looking for new ways to make life in our community as fun and enjoyable as possible.

We take time to get to know everyone, and help every individual to continue to enjoy the things they love to do.

We believe in fairness – so your fees will not go up while you are with us. We're also pretty straight talking, so you can read our documents and understand them. And we care about wellness for everyone – residents and staff.

We're a family of friends in a supportive and caring community. The most important things in life to us are the people we live together with every day.

It's a wonderful retirement lifestyle at Olive Tree

At Olive Tree Retirement Village, we help to provide days of fun that are full and rich. Every resident is encouraged to enjoy the in-house activities on offer, or take part in our many excursions and shopping trips around Palmerston North. There is always so much to do here at Olive Tree. Whether it is reading a book in a quiet nook in the garden, playing a

few ends of bowls with friendly rivals, or catching up with a neighbourhood mate for a yarn, the choice is yours. Tapping into the social calendar is a great way to make new friends, or you can invite family and friends from outside the Village to come along for a visit. Our motto is always the same at Olive Tree: The more the merrier!

The best decision I've made...

We moved to Olive Tree in early 2014. My wife had Alzheimer's and I wanted to get her settled into a village before it advanced. After looking at several villages we brought a villa at Olive Tree. The lovely established grounds and the friendliness of the villagers sold it to us. My wife unfortunately is now in the dementia unit at Olive Tree. It's lovely that I can walk across and see her at any time.

I consider that this move to Olive Tree Village is the best decision I have made. There are plenty of social activities on offer, a spacious community/meeting centre, a well stocked library, a snooker room with a full sized table and a large indoor heated pool. Other activities like bowls, badminton, croquet and cards are all great social activities.

Olive Tree Residents

A few of the common questions...

Why do people love living at Olive Tree?

We listen to our residents and what we consistently hear is:

- Olive Tree Villas offer privacy, space and individuality
- Our staff are friendly and professional.
- Our rooms and facilities are lovely and warm
- The gardens are beautiful & colourful.

What levels of care are there?

Our village offers a continuum of care, that ranges from fully independent living through to Rest Home and Dementia care which means you'll have real peace of mind. We can tailor a package of support just to suit your needs.

Can I move into other accommodation in the village later on?

Yes, as part of our community, you will have priority to access additional services or accommodation at Olive Tree that you might need in the future.

What happens if I have an emergency in my home?

There is an emergency call system throughout the Village. A staff member will respond to your call and arrange assistance as needed.

Can my family and friends stay with me in my home?

Yes of course, you can have family and friends come to stay for holidays. There is parking available for visitors within the village.

Can I have my pets with me?

Yes, we know that pets are important and are often a much loved part of the family. Our Manager will need to confirm that your pet is suitable for our village.

Is there space for my car?

Some of our Serviced Apartments have parking provided also – please ask our village manager for more info. Villas all come with an internal access garage.

Is there security at night?

Our village is fully fenced with security tag access after hours. Our staff are also on site 24 hours a day, should you need them. The emergency call system throughout the village gives added peace of mind.

What costs am I responsible for?

In addition to the Deferred Management Fee, you will be responsible for:

- Your telephone bill
- Your contents insurance
- Your car insurance
- Your power bill (Villa only)

There is also a weekly village fee which in the case of Serviced Apartments includes power. There will also be costs for any

extra services should you require them. e.g. laundry and house cleaning. See our Serviced Apartment brochure for details and current prices.

Can I arrange for any other fittings to be added to my home?

At Olive Tree, we do everything we can to ensure you have your home the way you want it. You can choose to add items to make life a little easier like additional heating, a security door or fly screens. We can help you with these extras but they will be at your cost.

Who pays for maintenance?

Olive Tree Village takes care of all exterior maintenance of your home, gardens and communal facilities.

What happens when I leave?

We do our best to support you and your family in every way we can. The village Fees stop immediately after you leave, and we begin the marketing and sale of your ORA.

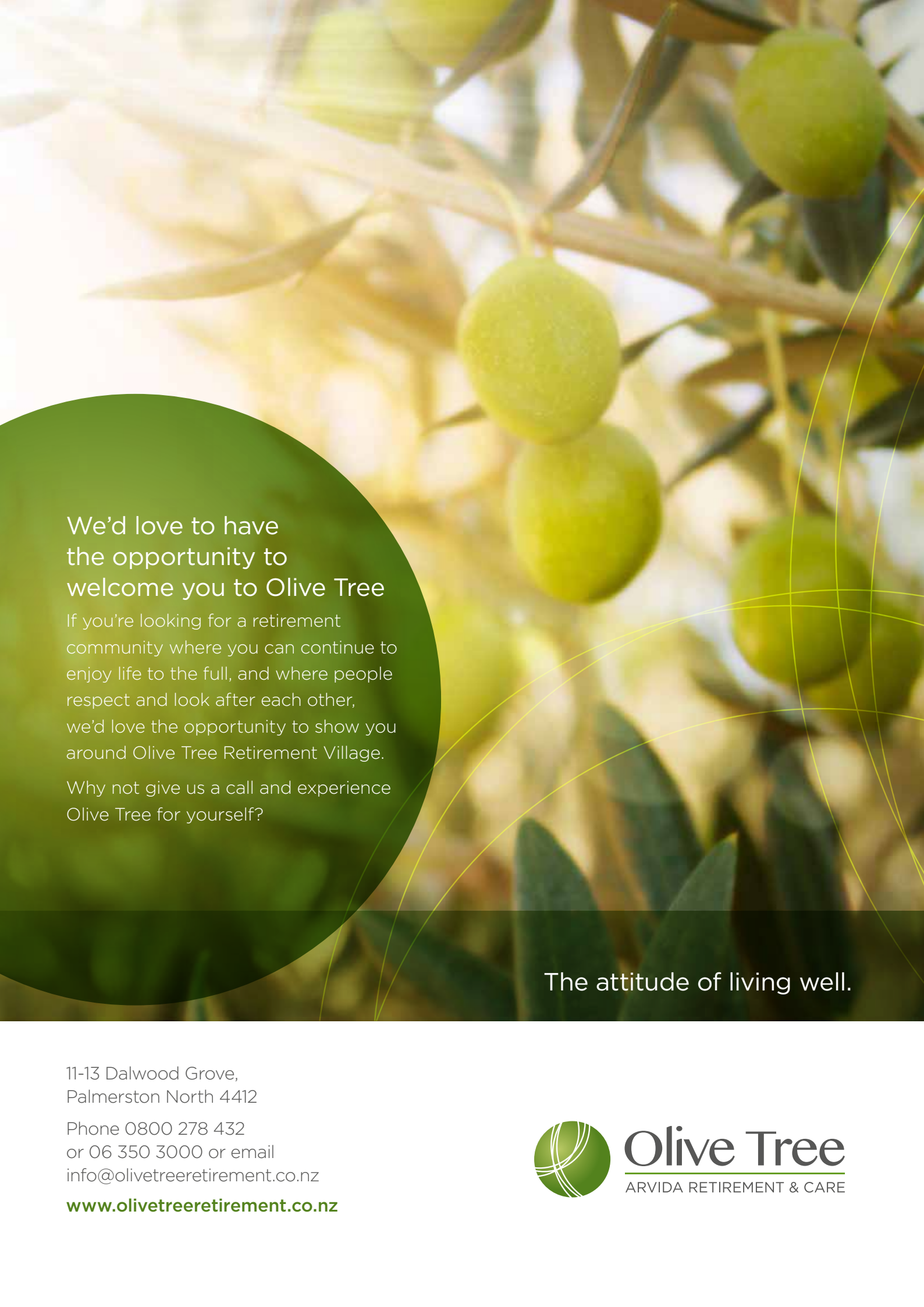
Who is our Village Manager?

Olive Tree's Village Manager Robyn Ballard has over 15 years of experience in Retirement Villages and is passionate about all that Olive Tree has to offer.



Robyn Ballard
Village Manager



A close-up photograph of an olive tree branch with several green olives. The background is softly blurred, showing more of the tree and some yellow light filtering through the leaves. A large, dark green circular graphic is positioned on the left side of the page, containing white text. Thin, curved yellow lines are overlaid on the right side of the page.

We'd love to have the opportunity to welcome you to Olive Tree

If you're looking for a retirement community where you can continue to enjoy life to the full, and where people respect and look after each other, we'd love the opportunity to show you around Olive Tree Retirement Village.

Why not give us a call and experience Olive Tree for yourself?

The attitude of living well.

11-13 Dalwood Grove,
Palmerston North 4412

Phone 0800 278 432
or 06 350 3000 or email
info@olivetreeretirement.co.nz

www.olivetreeretirement.co.nz



Olive Tree
ARVIDA RETIREMENT & CARE