



ARVIDA  
**Village at the Park**

An Arvida Living Well Community



Welcome to Village at the Park, an Arvida Retirement Community in the heart of Wellington.

We challenge ourselves to make our customers' lives better with everything we do.

## Every individual plays a part at Village at the Park

Village at the Park is one of Wellington's most centrally located, comprehensive lifestyle communities offering a full range of living and care options, with the convenience of being so close to the vibrant heart of New Zealand's capital city.

On offer are a range of villas and independent apartments alongside studio care options, where you can receive the care or support you require.

Our rest home, hospital and dementia care households provide the reassurance of knowing that you have priority access to a full continuum of care should your needs change in the future – and all in familiar surroundings.

## Our people at Village at the Park love their jobs and what they do

We love our jobs here, and we naturally form strong bonds with our residents. We love to organise gatherings to get people together and to join in. We focus on the welfare of every resident in our care and try to make a difference in their lives every day. Social engagement, fun and laughter are essential ingredients in our inclusive and caring community.

## Be part of a community that values you

As an Arvida community, we take care and time to listen, and we'll help you continue to enjoy the things that you love to do. We'll encourage participation and engagement in our community, and we'll help you to remain active and happy.

Our residents really are a friendly and social group. We all respect each other's privacy, and we enjoy our neighbours' company at the many events in our community.

Village at the Park is located on the former Athletic Park site originally owned by The Wellington Tenth Trust, descendants of the original Te Atiawa/Taranaki whanau of Wellington. In 2002 they entered into a partnership to create Village at the Park on this site. We are very proud of this heritage and in recognition of that, we have named our care households after two women who had long standing involvement with Athletic Park – Mary Coleman and Rawinia Buchanan.

We take pride in providing a fantastic community centre which can be enjoyed by every resident. It is centrally located and offers a wide range of facilities including Scrummy Café, a cinema, library, gym, indoor and outdoor sports, hair and beauty salon, chapel and card room.

Set amongst beautiful gardens, Village at the Park is a community within a community – with residents enjoying the swimming pool and spa, full bowling green, petanque and even getting their hands dirty in our vegetable garden and composting area.







## Our professional staff offer real peace of mind

Village at the Park's Village Manager is supported by a dedicated team including clinical managers, registered nurses, enrolled nurses and wellness partners, all with a passion for aged care. We value the importance of education and all our staff participate in our diverse continuing education programme.

## Flexible care plans

We are able to look after your current needs, and can also provide more care and assistance should your personal circumstances change.

We offer a full range of care plans for residents who are fully independent through to those who are not able to live independently. Should short term or permanent care be required we offer a full range of options. This gives you, your partner and your family the comfort of knowing you'll always have the support and care you need, when you need it.

## Rest home, hospital and specialised dementia care

Village at the Park is one of Wellington's most comprehensive communities, offering a full range of living and care options.

All levels of care are provided within our care facilities, including 17 care suites, 42 hospital rooms and 33 dementia care rooms. Premium and standard rooms are available in each care unit.

A registered nurse is on site at all times, 24 hours a day, 7 days a week. Each care area has a clinical manager who is a registered nurse. In addition our enrolled nurses, care assistants, household staff, maintenance and grounds staff ensure Village at the Park's residents are fully catered and cared for.

## We're well known for our personal care

Village at the Park is well known in the wider Wellington community for offering a full continuum of care for its residents.

You can access care services while living independently in your own independent apartment. We can assist with meals, laundry, cleaning, access to doctors and nurses and 24 hour emergency assistance. We also provide full rest home level care and have the ability to transfer you from a villa or apartment to our hospital.

The availability of continuing care within the village means that all residents have preferential access to the rest home care suites and hospital. This enables us to look after your current requirements and adapt to changes in your health or personal circumstances, should they occur.

Ask us about how we can tailor our care plans for you, or take a look at our specialist brochure for our serviced apartments.

## Continuing care plan options:

Our fees are carefully calculated so that we can provide the optimum care for you. We have several care packages available, from basic entry level to full rest home and specialised dementia care. Ask our Village Manager for a full list of costs and inclusions.





## The accommodation at Village at the Park

### Independent villas

Our independent villas offer you the best of both worlds – freedom to come and go as you please, while knowing our friendly community will welcome you home.

Each of our villas have been architecturally designed and arranged with your comfort, convenience and security in mind. Every villa is unique in its design and we have taken care to ensure that all homes enjoy plenty of sun and privacy.

Village at the Park has a selection of two and three-bedroom villas, each featuring spacious living areas with easy access to gardens. Quality fittings and furnishings

allow you to relax in complete comfort and privacy. Ensuite bathrooms feature a shower, slip-reduction tiles and underfloor heating. All villas have a private outdoor space and spacious bedrooms include built-in wardrobes. Most villas have heat pumps and an independent laundry in the garage.

Villa's have an emergency call option monitored by INS 24 hours a day. Apartment residents have emergency call buttons in their homes connecting them to on-site nursing support.

Most villas have garages attached and additional on site parking is available if required.

### One and two-bedroom apartments

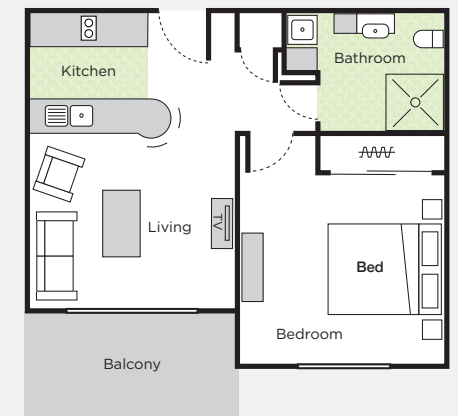
Our impressive apartments come in a range of sizes and configurations to suit your requirements. All apartments are spacious with plenty of natural light and have a wide range of services available depending on your individual requirements. Each has an individual balcony or patio and a full kitchen with dish drawer, oven and, breakfast bar. Apartments feature spacious bedrooms with built-in double wardrobes. Rooms have radiator heating, large storage cupboards, LED lighting throughout and a tiled ensuite with slip-reduction tiles and underfloor heating.

### Rest home, hospital and specialised dementia care

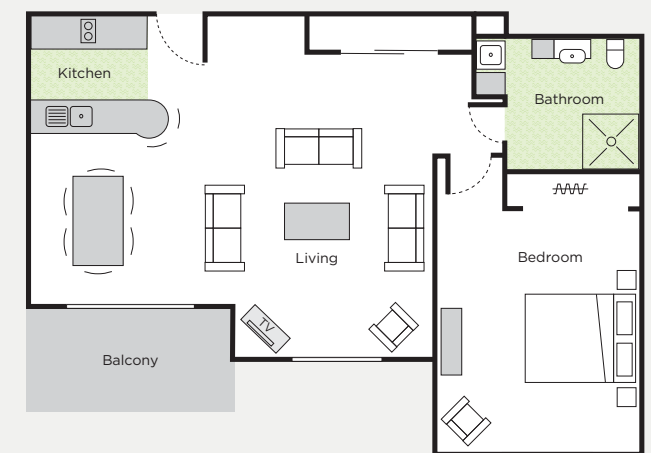
Millard household provides 17 care suites within a very modern building. Rooms open onto a beautifully landscaped courtyard and feature full ensuite facilities. There are numerous communal areas available including lounge areas, dining room, library and outdoor seating areas and the community centre is accessible to all residents.

The Mary Coleman household offers 42 modern and spacious hospital rooms with ensuite facilities, electric beds, specialised mattresses, individual lazy-boy chairs and specialist care delivery equipment.

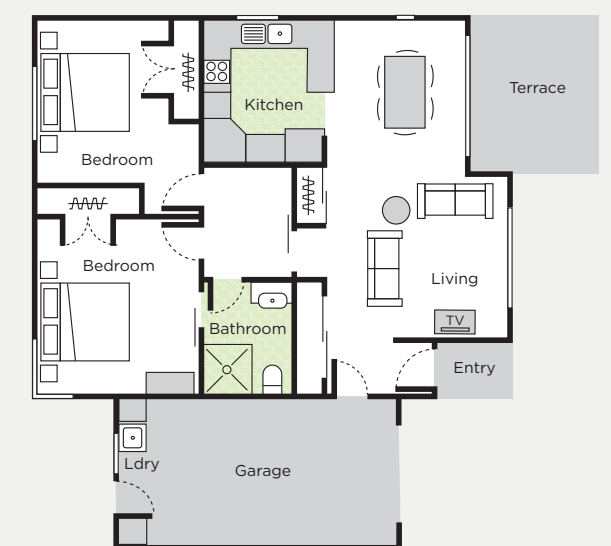
Buchanan household is purpose built for dementia care. All 33 rooms have ensuites and the design of the units allows residents to move freely both inside and out through the secure courtyard areas, which all have seating and shade protected areas.



*Typical 1-bedroom serviced apartment*



*Typical 1-bedroom serviced apartment*



*Typical 2-bedroom villa*





## It's a wonderful lifestyle at Village at the Park

At Village at the Park, we help to provide days of fun that are full and rich. Every resident is encouraged to enjoy the in-house activities on offer, and to take part in our many excursions and shopping trips around Wellington.

There is always so much to do here. Whether it is reading a book in a quiet nook in the garden, playing petanque with friendly rivals, or catching up with a neighbour, the choice is yours!

Village at the Park has an extensive activities programme that caters for the needs and interests of all our residents.

Friends and family are welcome to visit for activities and special events, or to join our regular 'happy hour' for drinks and nibbles. You may also choose to make use of Scrummy Café which is the social epicentre of community life, or just watch a movie on the big screen in our cinema room.

## Our commitment to you

Village at the Park is an Arvida community so we all enjoy the down to earth values that drive everything we do. We're always looking for new ways to make life in our community as fun and enjoyable as possible.

We're a family of friends in a supportive and caring community. The most important things in life to us are the people we live together with every day.

## The best decision you'll ever make!

It is always a big decision to move away from your family home, but when the time is right to scale down, you really need to do your homework.

We can help you with this decision by showing you what Village at the Park already offers the residents who live here. We welcome you to visit any time, and have a chat with members of our community to find out for yourself

what makes our community so special. Enjoy independence and privacy with no maintenance worries and socialise with your new friends. There's always so much to do here – there's no chance of getting bored!

We're happy to show you around Village at the Park any time. Why not give us a call to have a chat about your personal needs.



## A few of the common questions...

### Why do people love living at Village at the Park?

We listen to our residents and what we consistently hear is:

- We love the community feel and the close connection to its historic past and the proximity to central Wellington
- I've made a lot of new friends with different interests from mine
- This is a place of smiles
- I just love coming home to my warm house.

### What levels of care are there?

We offer a full continuum of care, which means you'll have real peace of mind. The care packages range from low level care right through to rest home, hospital and dementia care.

### Can I move into the care facilities of the community later on?

Yes, as part of our community, you will have priority access to the care services offered by Village at the Park. If you might need a little extra help in the future with your day-to-day living, you can choose to move within our community to more suitable accommodation.

### What happens if I fall ill while living in my serviced apartment?

If your health needs change, we're here to provide you with personalised care and support. In many cases, care packages can be tailored so that you can receive added support in your home. If you

require respite or full time care we can talk through the options with you.

### Can my family and friends stay with me in my villa or apartment?

Yes of course, anytime while they are visiting you can have family and friends come to stay in your independent villa or apartment.

### Can I have my pets with me?

Yes, we know that pets are important and are often a much loved part of the family. You can have a small pet in your villa, but you will need to contact our Village Manager to confirm that your pet is suitable. Visiting pets are welcome in our care facilities.

### Is there space for my car?

Most villas have internal access garages. There is additional onsite parking also – please ask our Village Manager for more info.

### Is there security at night?

Our staff are on site 24 hours a day. Residents have access to our emergency call bell system in each apartment.

### What other costs will I have in my 'Licensed to Occupy' apartment or villa?

In addition to the Deferred Management Fee, you will be responsible for:

- Your telephone bill
- Your contents insurance
- Your car insurance
- Your power bill (villas only)



There is also a weekly village fee which in the case of apartments includes power. There may also be costs for any extra services should you require them. e.g. laundry and house cleaning. See our serviced apartment brochure for details and current prices.

### Can I arrange for any other fittings to be added to my home?

We do everything we can to ensure you have your home the way you want it. You can choose to add items to make life a little easier like additional heating and security door or fly screens. We can help you with installation of these extras but they will be at your cost.

### What happens when I leave?

We do our best to support you and your family in every way we can. The village fees stop immediately after you leave, and we begin the marketing and sale of your ORA.

### Meet our new Village at the Park Manager Moira Naughton.

Moira has been working in communities for over 65s for more than 10 years and loves getting to know residents well. Her experience in senior management roles both here and in Scotland complement her natural ability to connect with people – and now offers Village at the Park a unique and very special community feel.



A photograph of an outdoor patio area with a metal table and chairs. In the background, there are lush green plants and a white building. An orange circular graphic is overlaid on the left side of the image, containing text.

## We'd love to have the opportunity to welcome you to Village at the Park

If you're looking for a retirement community where you can continue to enjoy life to the full, and where people respect and look after each other, we'd love the opportunity to show you around Village at the Park.

Why not give us a call and experience Village at the Park for yourself?

130 Rintoul Street  
Berhampore, Wellington 6023

Phone 0800 278 432  
or 04 380 1361 or email  
[info@villageatthepark.co.nz](mailto:info@villageatthepark.co.nz)

**[www.villageatthepark.co.nz](http://www.villageatthepark.co.nz)**



ARVIDA  
**Village at the Park**

An Arvida Living Well Community