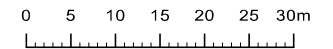
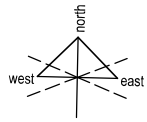


Maryville

living life... loving life

COURTS



C O L O M B O S T R E E T



M A N C H E S T E R S T R E E T

- MARYVILLE COMMUNITY CENTRE
- MARYVILLE COURTS VILLAGE
- ACCESSORY FACILITIES

- A EMERGENCY CONGREGATION AREA
- B LETTERBOXES
- C RECYCLING/ RUBBISH BINS
- D RECEPTION / OFFICE AREA

MAIN ENTRY at 155 SALISBURY STREET

S A L I S B U R Y S T R E E T

Maryville

COURTS

living life... loving life



SAMPLE PLAN

0 1 2 3 4 5m

VILLA 1. Double bedroom

Net Floor Area - 68m²

ROOM LIST

| | |
|----------------|------------|
| LIVING/ DINING | 3.7 x 5.6m |
| SUN ROOM | 2.8 x 2.8m |
| KITCHEN | 3.0 x 2.3m |
| BATHROOM | 1.6 x 1.6m |
| LAUNDRY | 3.7 x 1.7m |
| WC | 0.9 x 1.7m |
| MASTER BEDROOM | 2.9 x 3.2m |
| SECOND BEDROOM | 2.0 x 3.7m |

FEATURES

Well appointed kitchen with electric hob, oven, range hood and vinyl floor coverings

Open plan dining and living areas, with carpet floor coverings and heatpump

Bathroom with vanity, shower, heater, heated towel rail and vinyl floor coverings. Seperate toilet off laundry

Main bedroom to accomodate queen bed, with large built in wardrobe. Smaller guest bedroom.

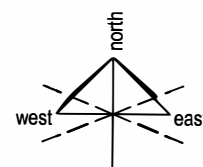
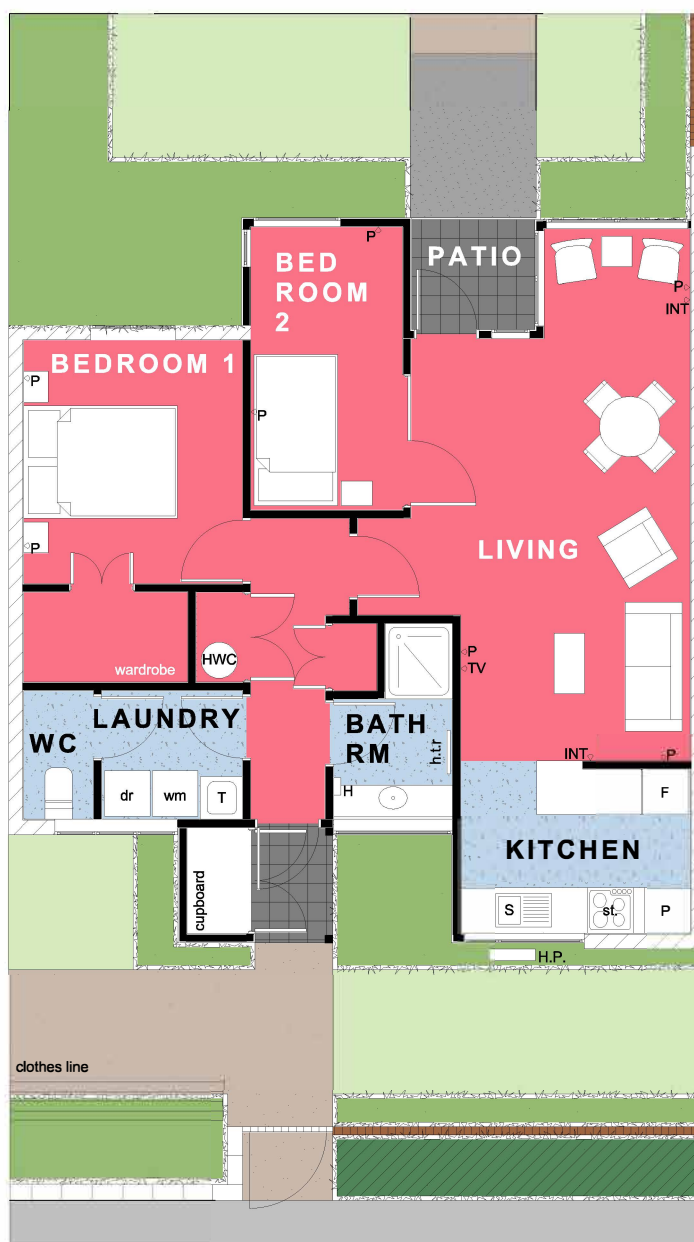
Curtains throughout, kitchen blinds

Patio with garden outlook and clothesline

Maryville

COURTS

living life... loving life



0 1 2 3 4 5m

SAMPLE PLAN

VILLA 5. Double bedroom

Net Floor Area - 66m²

ROOM LIST

| | |
|----------------|------------|
| LIVING/ DINING | 3.7 x 5.6m |
| SUN NOOK | 1.9 x 1.4m |
| KITCHEN | 3.0 x 2.3m |
| BATHROOM | 1.6 x 1.6m |
| LAUNDRY | 3.7 x 1.7m |
| WC | 0.9 x 1.7m |
| MASTER BEDROOM | 2.9 x 3.2m |
| SECOND BEDROOM | 2.0 x 3.7m |

FEATURES

Well appointed kitchen with electric hob, oven, range hood and vinyl floor coverings

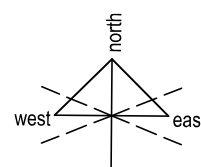
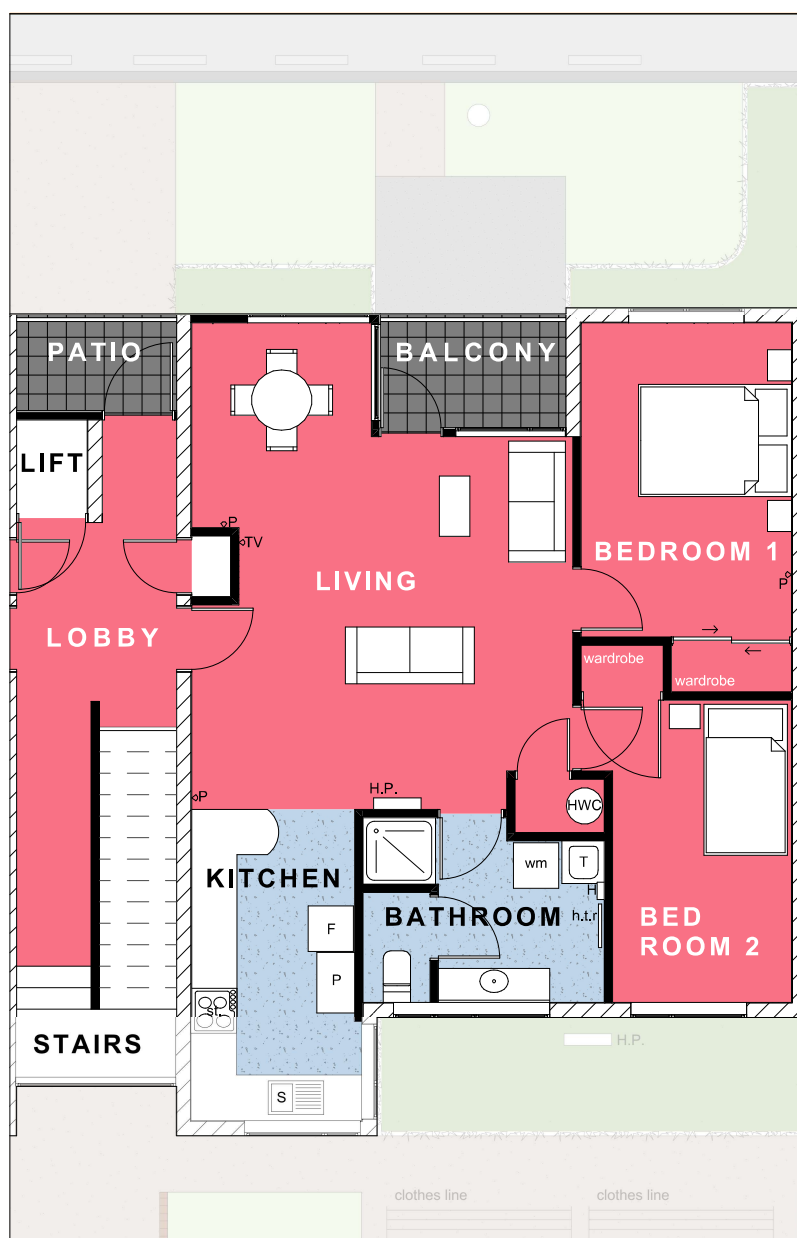
Open plan dining and living areas, with carpet floor coverings and heatpump

Bathroom with vanity, shower, heater, heated towel rail and vinyl floor coverings. Seperate toilet off laundry

Main bedroom to accomodate queen bed, with large built in wardrobe. Smaller guest bedroom.

Curtains throughout, kitchen blinds

Patio with garden outlook and clothesline



0 1 2 3 4 5m

SAMPLE PLAN

VILLA 37. Double bedroom

Net Floor Area - 70m²

ROOM LIST

| | |
|----------------|------------|
| LIVING/ DINING | 3.7 x 5.6m |
| KITCHEN | 3.0 x 2.3m |
| BATHROOM | 1.6 x 1.6m |
| LAUNDRY | 3.7 x 1.7m |
| WC | 0.9 x 1.7m |
| MASTER BEDROOM | 2.8 x 4.1m |
| SECOND BEDROOM | 2.4 x 3.9m |

FEATURES

- Well appointed kitchen with electric hob, oven, range hood and vinyl floor coverings
- Open plan dining and living areas, with carpet floor coverings and heatpump
- Bathroom with vanity, shower, heater, heated towel rail and vinyl floor coverings. Seperate toilet off laundry
- Main bedroom to accomodate queen bed, single guest bedroom, both with built in wardrobes
- Curtains throughout, kitchen blinds
- Access via lobby; stairs or lift
- Patio with garden outlook and clothesline